

Petrie Station

Moreton Bay Rail Link will deliver a 12.6 km dual-track rail line between Petrie and Kippa-Ring. Six new rail stations will be delivered as part of the project at Kallangur, Murrumba Downs, Mango Hill, Kinsellas Road, Rothwell and Kippa-Ring. Works will also be required at Petrie Station where the Moreton Bay Rail Link connects with the existing rail network.

These stations will incorporate a high level of security and visually appealing urban design.

Station access and parking

- Existing parking along the east of the station will be relocated and expanded.
- A new park 'n' ride facility will be provided off Paper Street, via Gympie Road for commuters.
- Park 'n' ride numbers will be finalised as part of detailed design.

Preliminary station design

Final station design will be in accordance with guidelines developed by the TransLink Transit Authority and Queensland Rail.

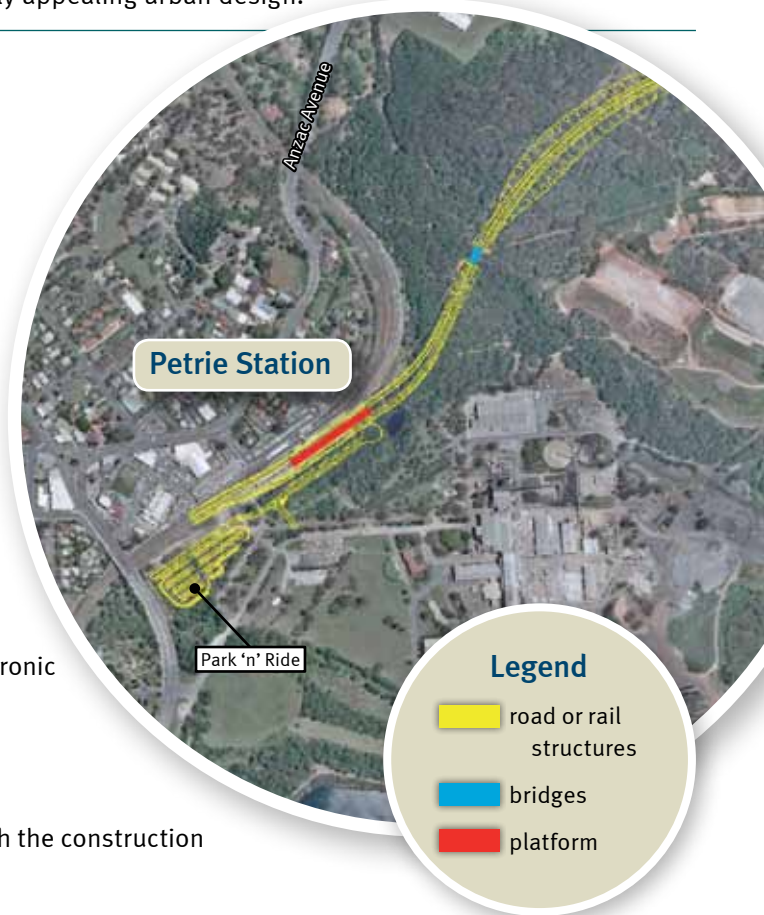
Station features will be refined during detailed design, but will typically include:

- a new 175-metre-long side platform, including an overhead walkway with stairs and lifts, passenger waiting facilities, electronic timetable information and other public amenities
- landscaping with native species and drought-resistant plants
- security cameras and emergency phones.

Work in operational corridor at Petrie Station will be integrated with the construction of the future third track between Lawnton and Petrie stations.

Construction impacts

The rail corridor has been moved further south than originally proposed between Petrie and Kallangur Station, away from residential properties at Caine, Beattie and Harding Streets.



Contact us

Moreton Bay Rail Link recognises the proximity of homes and businesses to the rail corridor. The project will carefully plan all work to ensure construction methodologies are chosen that limit the impact on the surrounding community as much as possible.

The project is committed to meaningful community engagement and encourages residents and businesses to contact the project team for more information.

Phone: 1800 096 821 *Free call within Australia. Higher rates apply from mobile phones and pay phones.*

Email: moretonbayrail@tmr.qld.gov.au

Website: www.tmr.qld.gov.au/moretonbayrail

Post: Moreton Bay Rail Link
Transport and Main Roads
Reply Paid 2439, Brisbane Qld 4001